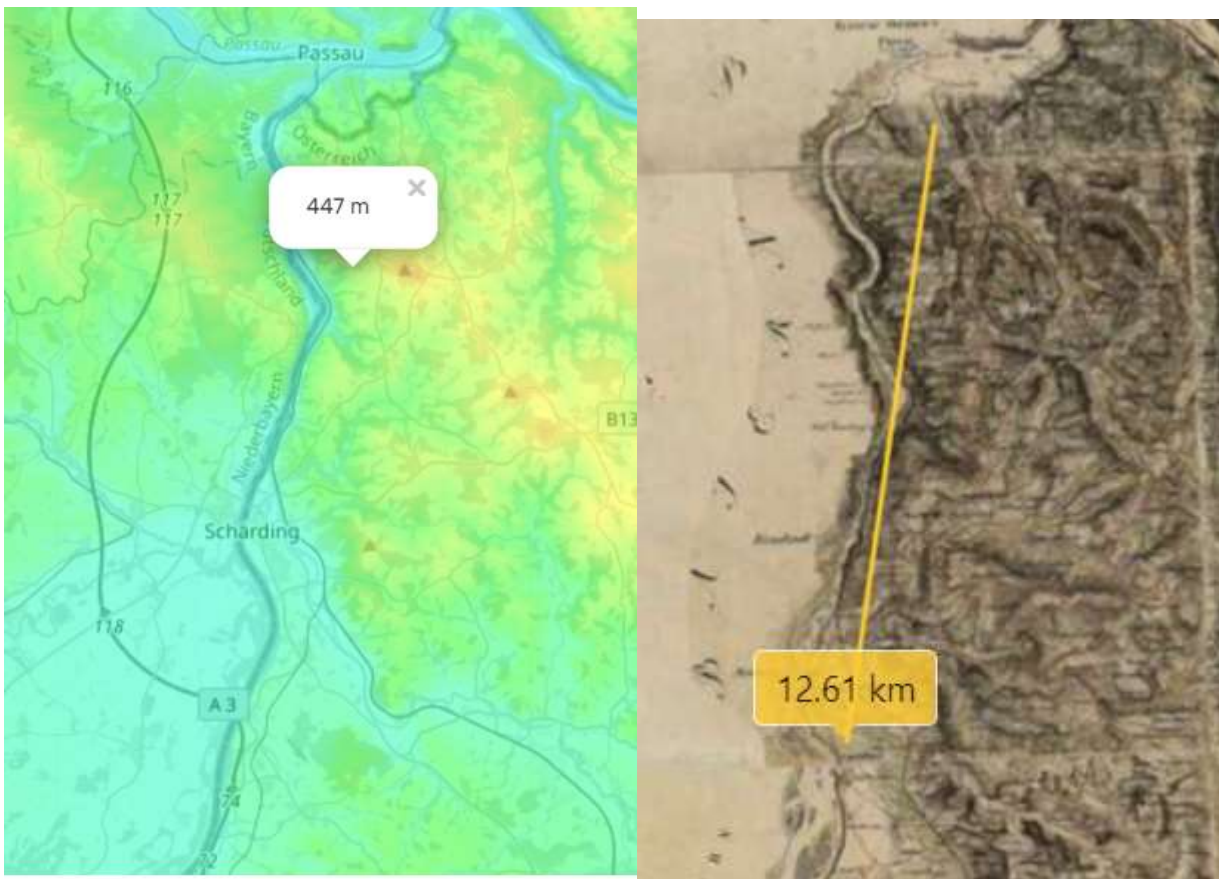




Schärding, the other bridge, is actually fortified, held by reasonably strong force of Austrians, for a while, unlikely to be forced. Hardly He can pull an Abensberg there.



So will end up having a forced passage vs an Austrian cordon defense over a 150-200m river (Inn) Sounds familiar? The French can path north under the gun of Oberhaus fortress of Passau, still in their hands. But facing this are fortified hills previously occupied by Passau south blockade force of Austrian landwehr, now reinforced with regulars. Not the best prospect. On the other hand the mobile bridge could be put nearby under massive guns protections.

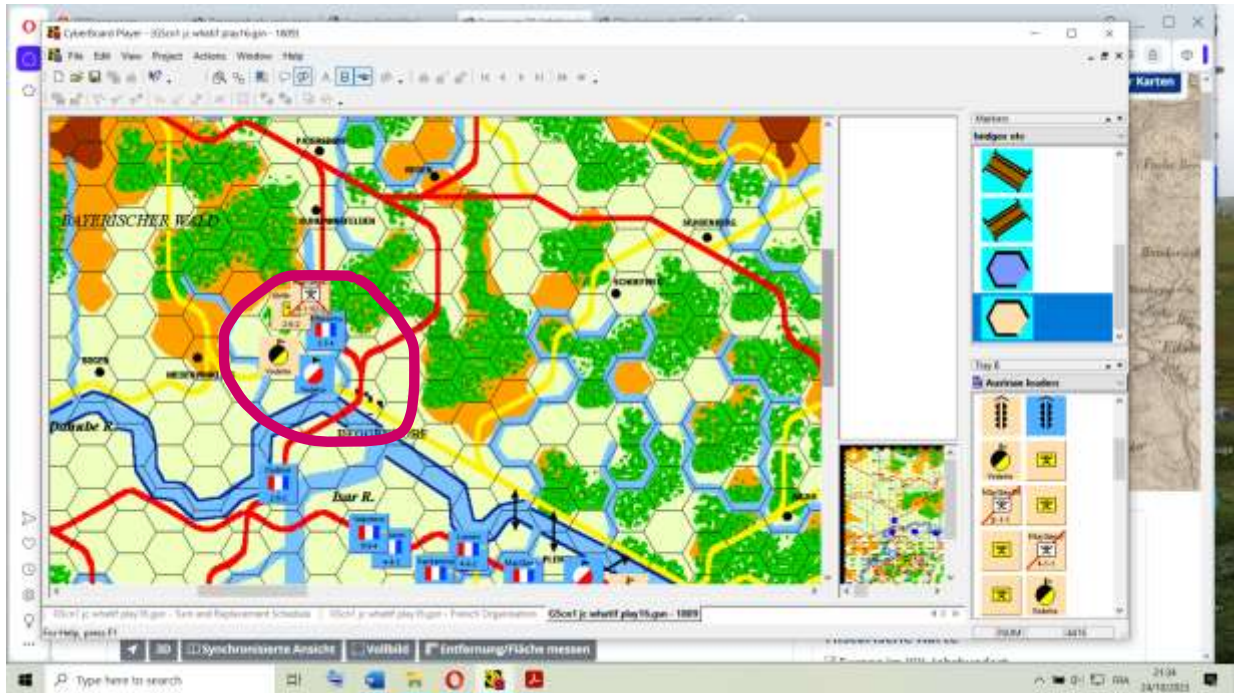
Now remains to study the deep details, woods and rises To find where to put a bridge. Essling west, maybe? All that before deciding if I can or will have a battle here.

Mean while...

Bellegarde in trouble

He is trying to rejoin the main army after his trying at Regensburg. He got caught by Massena while moving, warned by his scout he turned north to flee towards the main route there. But nein, he gets sucked into a fight.

Battle of Weibing 12 May 1809

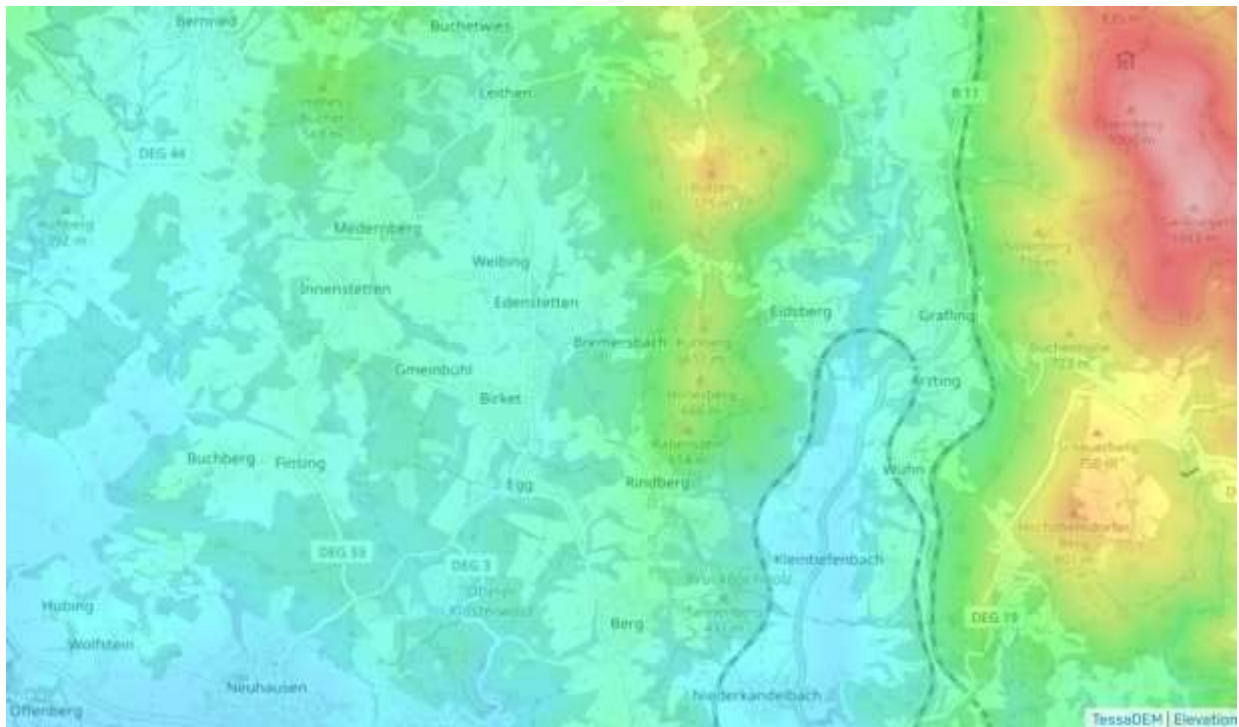


Massena

35000 inf. +4000 light cav.

Bellegarde

27000 + 2000 cav.



I will do a sort of encounter-delay battle there, Bellegarde does not have to stand to get beaten. Of course, he can be greedy, and try to go south and the way towards Charles, but his chances are not too good, moreover the broken terrain, big hills, woods etc. makes for the devil for coordinating Austrians not too good at this. Can be interesting to fight though. To be updated...